

**Classic** — A sophisticated aesthetic. The Classic collection furnishes the office space with high-backed executive seating, managerial and meeting seating with fixed feet and stools, featuring an understated design and luxury covers, with a choice of eight catalogue finishes, fabric and leather, in numerous colour versions. The frame, in chromed steel or matte black coated, also has a base with five spokes available in matte black aluminium and gloss aluminium finishes.



**sitland**

---

EXTRA STANDARD CLASS

---

Classic + is the collection that responds with a touch of class, to the needs of manager and executive offices, but also to the needs of meeting rooms and waiting areas.

In fact, Classic + is available in the executive version with high back, manager and meeting version with fixed gliders.

---

THE MECHANICS OF COMFORT

---

Classic + is equipped with a tilt mechanism on central axis lockable in work position or with knee tilt mechanism lockable in 4 positions, tension control according to the user's weight and antishock device.

---

ELEGANT ALSO IN THE DETAILS

---

In addition to an elegant shape, Classic + is comfortable thanks to the seat and back pad in shaped foam polyurethane, CFC free.

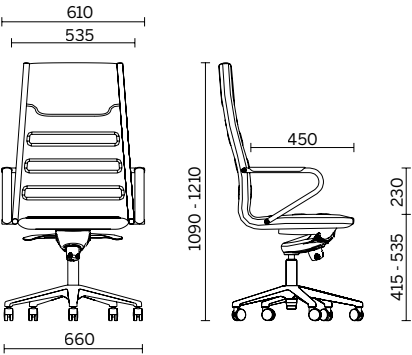
Different types of upholstery, bases and casters offer the possibility to choose the most suitable version for your needs.

Classic + outer structure in steel tube is available chromed or painted in matt black. The armrests integrated in the seat match the structure.

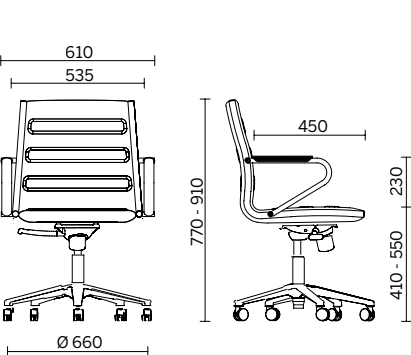


Models and dimensions

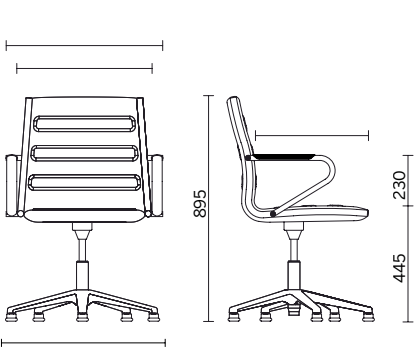
EXECUTIVE



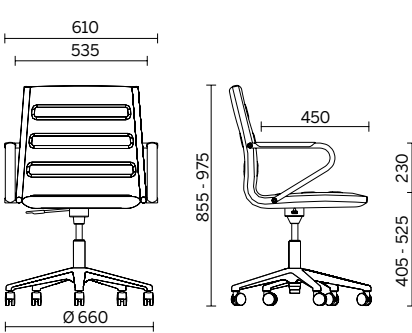
MANAGER



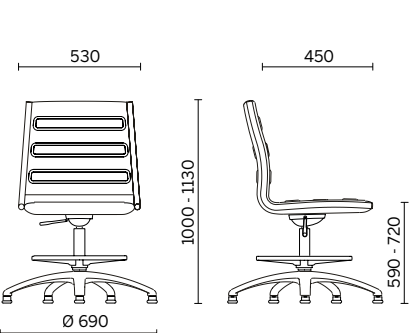
MEETING



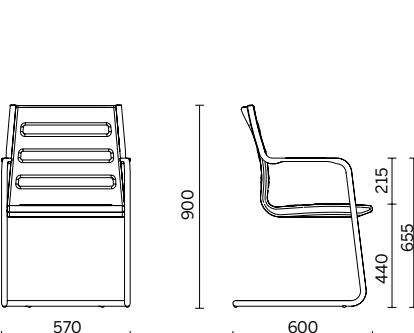
MEETING WITH ARMRESTS



STOOL ADJUSTABLE IN HEIGHT



STOOL ADJUSTABLE IN HEIGHT WITH ARM-REST



Mechanism

	executive	manager	meeting	stool
Tilting mechanism lockable in working position with one lever, body-weight adjustment.	•	•		
Knee tilting mechanism lockable in 5 positions, body-weight adjustment and anti-shock system.	•			
Seat height adjustment gas lift.	•	•	•	•
Fixed seat, swivelling, with memory return mechanism to bring the chair always in the front position.			•	•
Tilting system with gradual rocking toward the back and the front.			•	•

Bases and casters

BASES

5 star die-cast aluminium base, polished, ø 690 mm.



5 star die-cast aluminium base, matt black RAL 9005 finish, ø 690 mm.



5 star die-cast aluminium base, polished, ø 690 mm.



CASTERS

Free casters, ø 50 mm.



Self-braking casters, ø 50 mm.



Self-braking rubber casters, ø 50 mm for hard floors.



Self-braking rubber casters, ø 65 mm for hard floors.



Hollow free and rubber casters, ø 65 mm for hard floors, black structure.

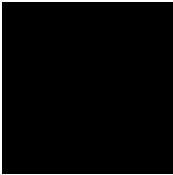


Hollow free and rubber casters, ø 65 mm, for hard floors, chromed structure.



Colours, materials, finishing

FRAME FINISHING



Matt black RAL 9005 finishing

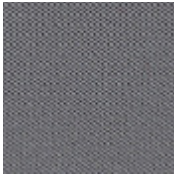


Chromed finishing

UPHOLSTERY



ME Fabric 13 Colours



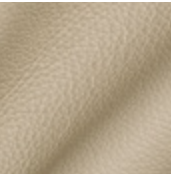
IP Fabric 13 Colours



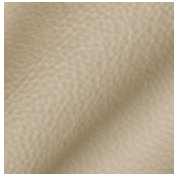
SY Fabric 11 Colours



Cl\_CX Ecological leather 13 Colours



N Ecological leather 13 Colours



S Leather 13 Colours



TS Leather 13 Colours

---

**PCON.PLANNER**

It is possible to configurate our model Classic+ by using pCon.planner program for the design of 2D an 3D environment.

pCon.planner allows to design working solutions in a fast and intuitive way, creating "realistic" images with advanced features, with a considerable saving of time and resources.

It is easy to start using pCon.planner: after downloading the software in the proper page, it is possible to download pCon. catalog, the practical online catalogue of products ready to be set up according to anyone's need, and then include the products in the projects.

For more information on the use of pCon. planner and the access to the products of the SitLand's catalogues, please contact [com@sitland.com](mailto:com@sitland.com)

---

**WARRANTY**

Classic+ has 5 years warranty. For any further detail, please contact Sitland's customer service at [service@sitland.com](mailto:service@sitland.com)



---

**MORE INFORMATION**

Sitland spa reserves the right to make modifications and improvements of a technical or aesthetic nature to the products at any time without notice.

Photos and colours shown are used for reference only and may look different in reality.

Please refer to the Price list in force and to the General sale conditions for the colours and the combinations available for every single product.

For any further information, please contact our Customer Service at [service@sitland.com](mailto:service@sitland.com)



Sitland spa  
via Cà Silvestre 52  
36024 Nanto, Vicenza - I  
t +39 0444 637 100  
f +39 0444 638 407  
info@sitland.com  
www.sitland.com

follow us on

