



## FEATURES

- Various types of desktop forms
- Three types of legs
- Supplementary units available

## QUALITY STANDARD

- LST EN 527-1:2011
- LST EN 527-2:2003
- All desks meet the requirements of the LST EN 527-3:2003 standard.

## TECHNICAL INFORMATION

### OPTIMA C

#### Desktop

- 25 mm MFC (melamine) with 2 mm ABS edging.

#### Modesty panel

- 25 mm MFC (melamine) with 0,5 mm ABS edging.

#### Legs for tables

- Welded metal tube (base 50x25 mm);
- Powder coated metal;
- Plastic feet with height levelling (+10 mm);
- Desk height – 720 mm.

#### Legs for supplementary unit

- Metal tube Ø 50 mm;
- Powder coated metal;
- Plastic feet with height levelling (+10 mm);
- Desk height – 720 mm.

#### Fittings for assembly

- Cams with connecting bolts.

### OPTIMA Plus

#### Desktop

- 25 mm MFC (melamine) with 2 mm ABS edging.

#### Modesty panel

- 25 mm MFC (melamine) with 0,5 mm ABS edging.

#### Legs

- 25 mm MFC (melamine) with 2 mm ABS edging;
- Plastic feet with height levelling (+10 mm);
- Desk height – 720 mm.

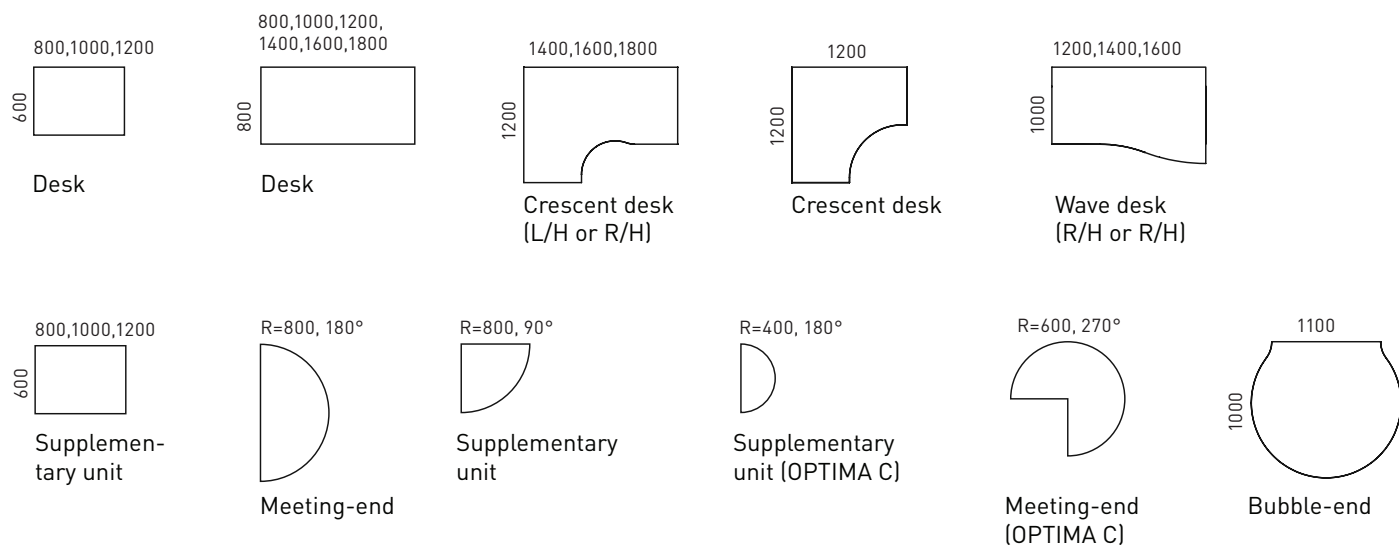
#### Fittings for assembly

- Cams with connecting bolts.

## GUARANTEE

- 5 years

## RANGE



## Optional



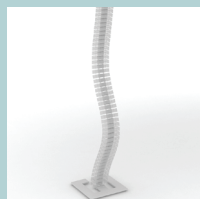
CPU holders



Cable trays



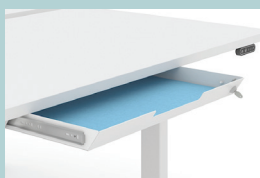
Cable clips



Cable ducts



Plastic leg inserts  
for cable management



Felt-lined metal drawers  
with lock